

STARLING

A QUILT PATTERN BY

Suzy  quilts

Active hyperlinks, so click where you see an underline!



TERMS

- **WOF** = Width of Fabric: cotton broadcloth commonly used for quilting is 42"; all pattern measurements assume fabric to be 42" wide from selvage to selvage.
- **Seam Allowance** = ¼"
- **FQ** = Fat Quarter: a pre-cut of fabric measuring ~18" x 21"
- **FE** = Fat Eighth: a pre-cut of fabric measuring ~9" x 21"
- **Sub-cut** = To cut a larger piece into smaller pieces.
- **Chain Piece** = To sew pieces of fabric together, one right after the other, without snipping the threads in between; this allows you to sew many pieces without stopping each time.
- **Bias** = The 45° angle across the surface of a woven fabric. Fabric cut on the bias stretches easily and must be handled gently.
- **Right Side / Wrong Side** = The right side of the fabric is the front of the fabric (if it's a printed fabric, it's the side with printing). The wrong side is the back. Some fabrics, like most solids, do not have a right or wrong side and can be used interchangeably.

A 10 ½" or 12 ½" square ruler is recommended for trimming the center block unit.

BACKING FABRIC NOTE: The backing yardage requirements for the Baby size include 3" of overage on each side; the larger sizes include 4" of overage on each side (standard for most longarm quilters).

The requirements assume the most efficient use of the yardage and do not account for directional fabrics or pattern matching. Adjust the backing yardage as needed to fit your needs. For an in-depth tutorial on seamlessly matching a print, visit bit.ly/match-print.

USE YOUR STASH: While fabric requirements are provided for FQs, this design lends itself beautifully to using scraps for the Color fabrics. See the Cutting Instructions on page 3 for the number of pieces of each size you'll need.

The fabric requirements for the Colors in this quilt attempt to balance the inclusion of lots of colors and the desire to limit fabric waste. Feel free to adjust the amounts based on your personal preference.

FABRIC REQUIREMENTS

	KING 104" x 106"	QUEEN/FULL 87" x 106"	TWIN 71" x 88"	THROW 62" x 70"	BABY 35" x 44"	PILLOW 20" x 20"
Colors	23 FQ	18 FQ	15 FQ	10 FQ	6 FQ	1 FQ and 2 FE*
Background**	6 ¼ yd.	5 ¼ yd.	3 ¾ yd.	2 ¾ yd.	1 yd.	¾ yd.
Binding	¾ yd.	¾ yd.	⅝ yd.	½ yd.	⅜ yd.	¼ yd.***
Backing	9 ¾ yd.	7 ¾ yd.	5 ¾ yd.	3 ¾ yd.	1 ½ yd.	⅝ yd.

* For the Pillow, you could get the necessary Color pieces from 1 FQ, but the requirements are written to include three colors, as shown in the mockup on page 8.

You can increase the number of fabrics to make it scrappier. Some of the sizes include enough leftover fabric to make a coordinating pillow (when combined with additional Background).

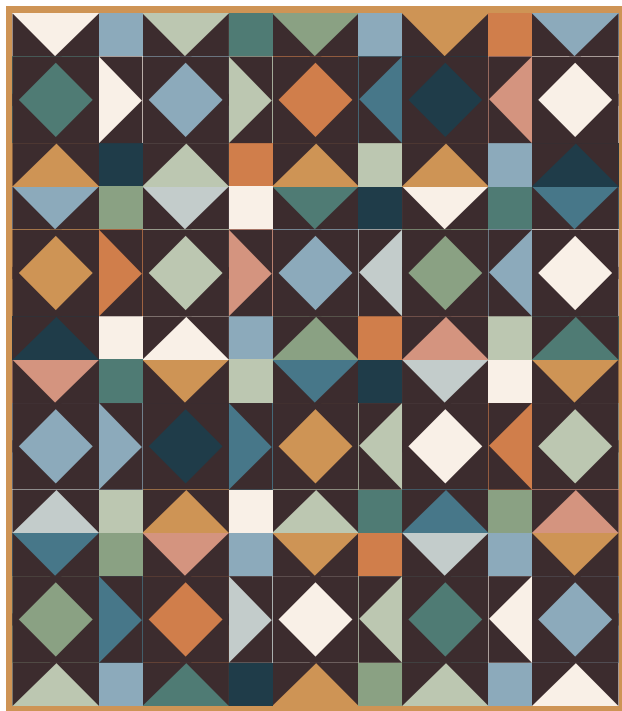
** Fabric requirements for Background assume you have at least a 42" WOF and can cut (7) 6" squares from a WOF. Cut carefully, as you will use every bit of the 42". If your WOF is less than 42" or you'd like to give yourself more room for error, adjust the fabric requirements accordingly.

*** If using binding for your pillow (see page 8 for pillow-finishing options).

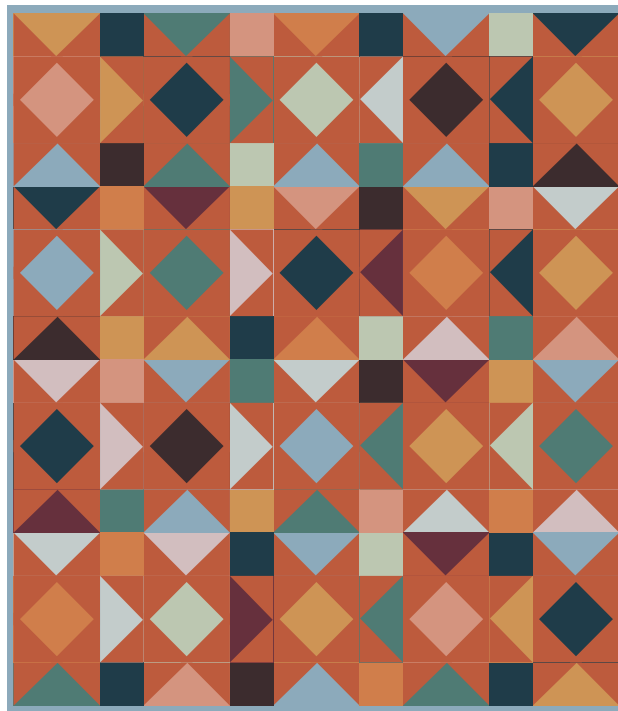
COLOR OPTIONS

There are so many different ways to make this quilt! Here are a few ideas to get you started.

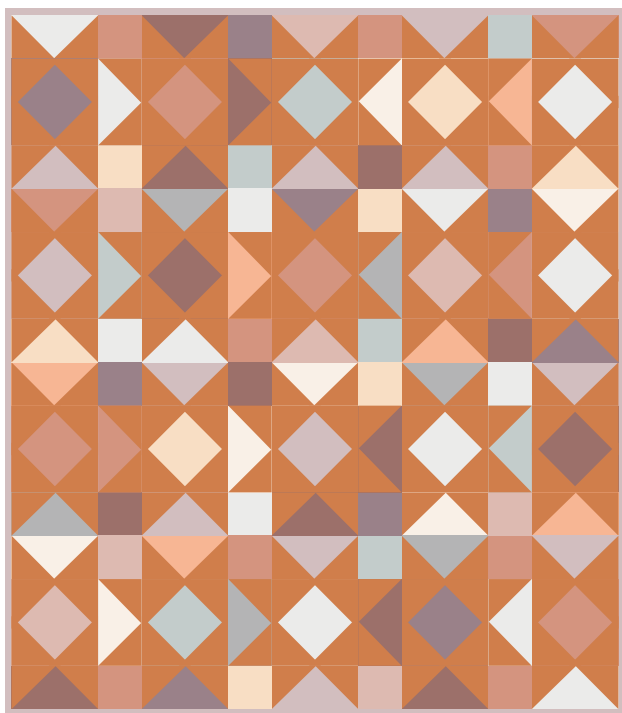
FORAGED



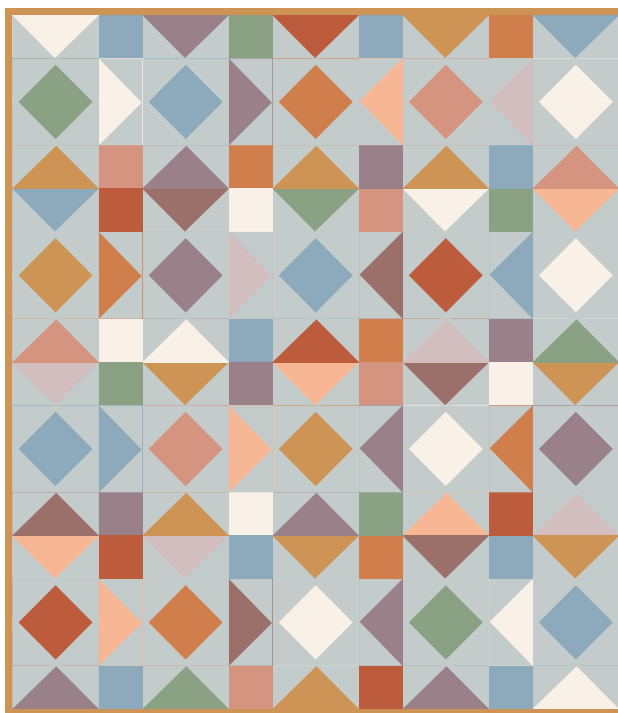
THE FLOOR IS LAVA



EARTHENWARE



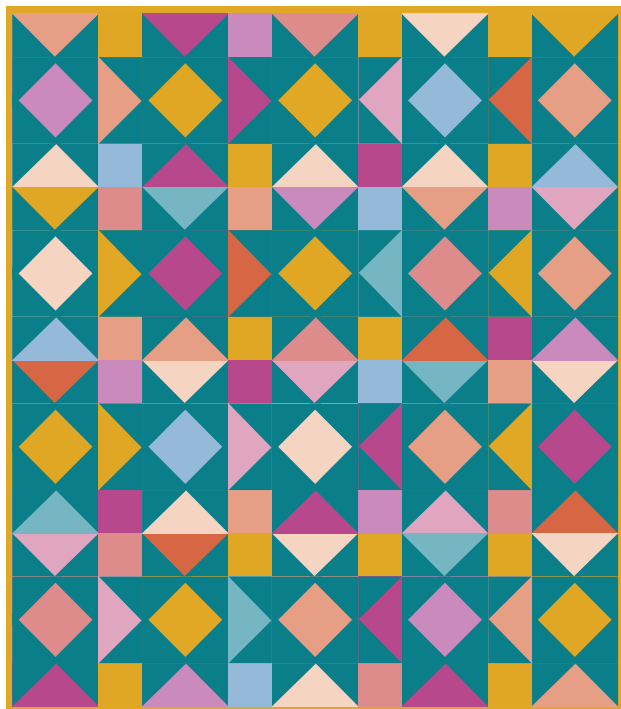
PANCAKES FOR DINNER



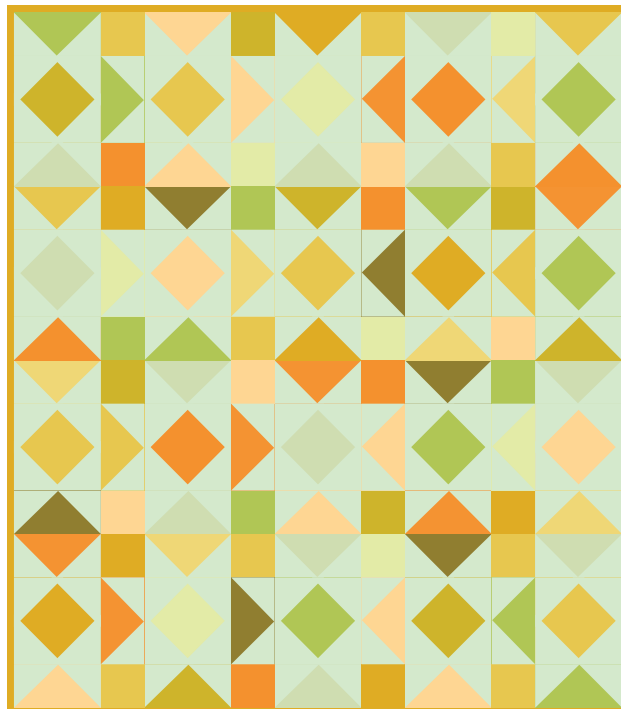
COLOR OPTIONS

There are so many different ways to make this quilt! Here are a few ideas to get you started.

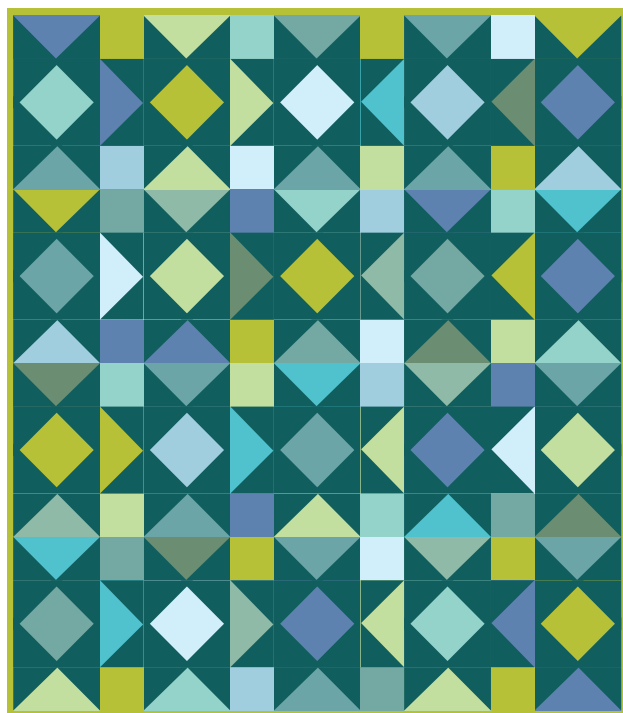
FALL FESTIVAL



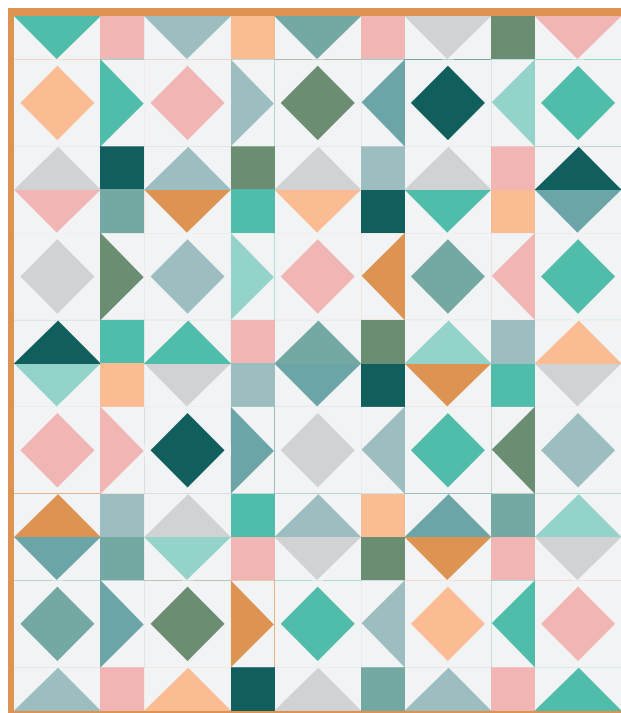
BEE-HIND THE SCENES



OCTOPUS TEACHER



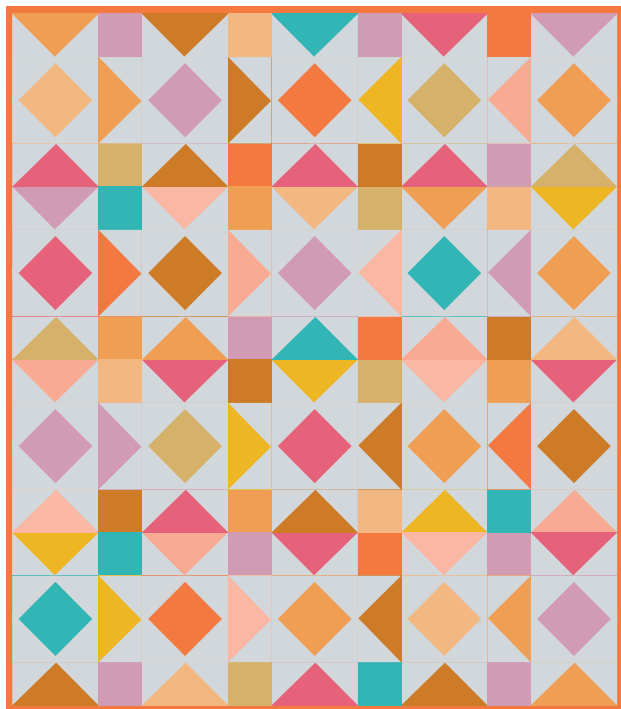
BIRTHDAY BOUQUET



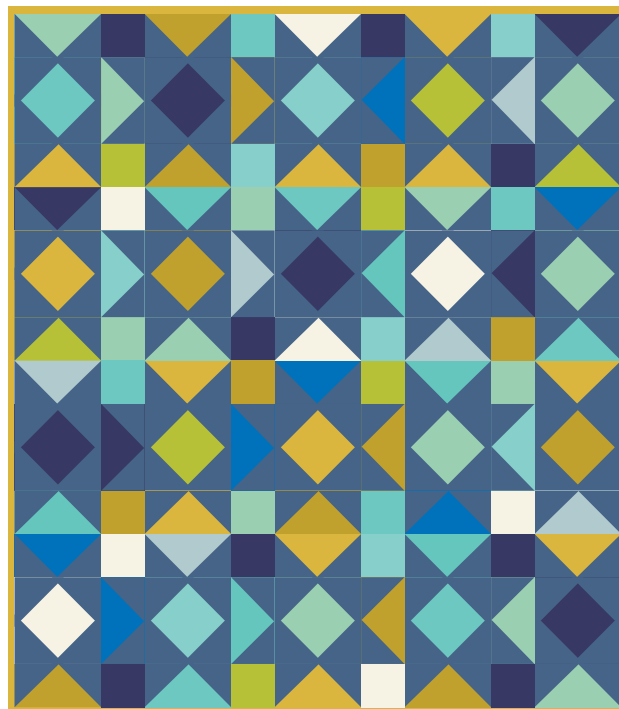
COLOR OPTIONS

There are so many different ways to make this quilt! Here are a few ideas to get you started.

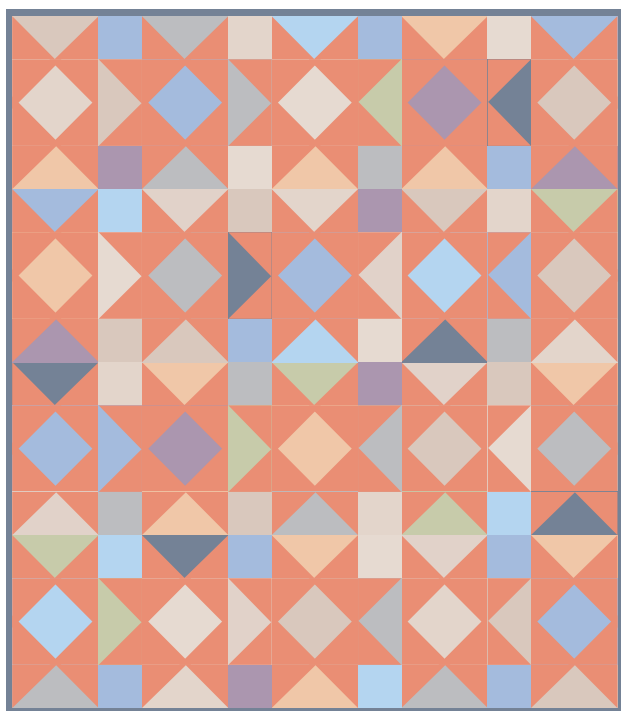
MARIGOLDEN HOUR



RATED PEA-G



SHRIMPY



SUNKISSED

